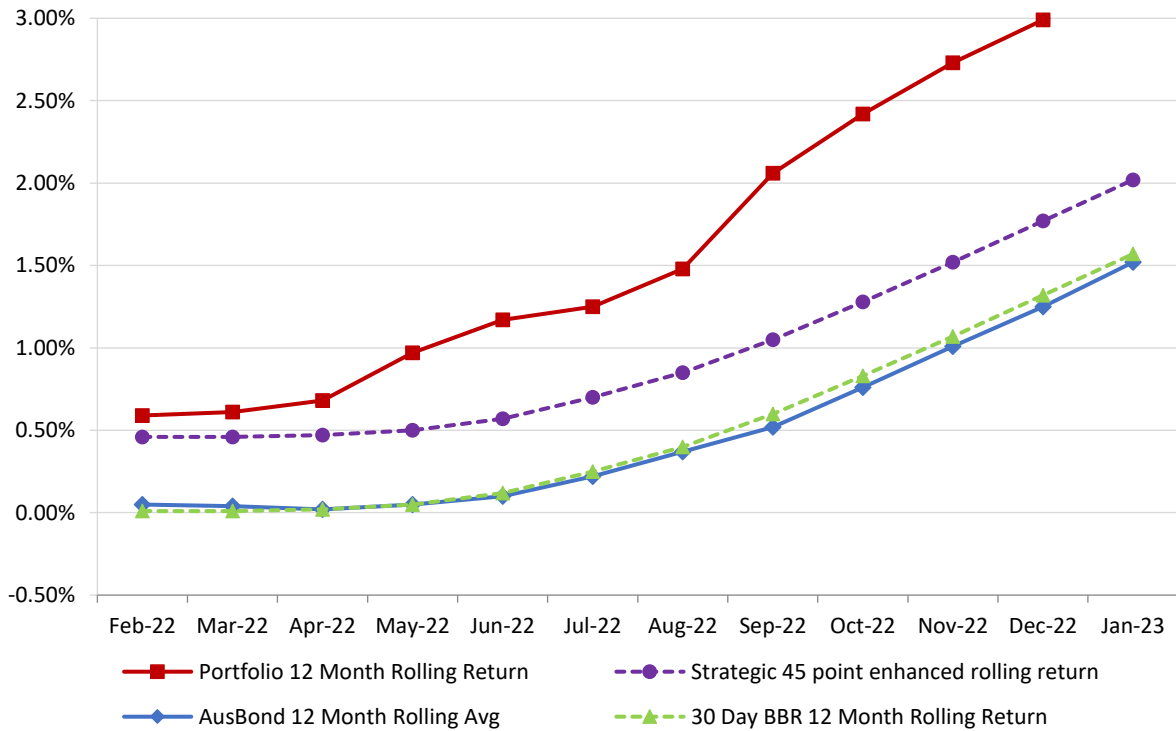


# **Attachment B**

**Investment Performance  
as at 31 January 2023**

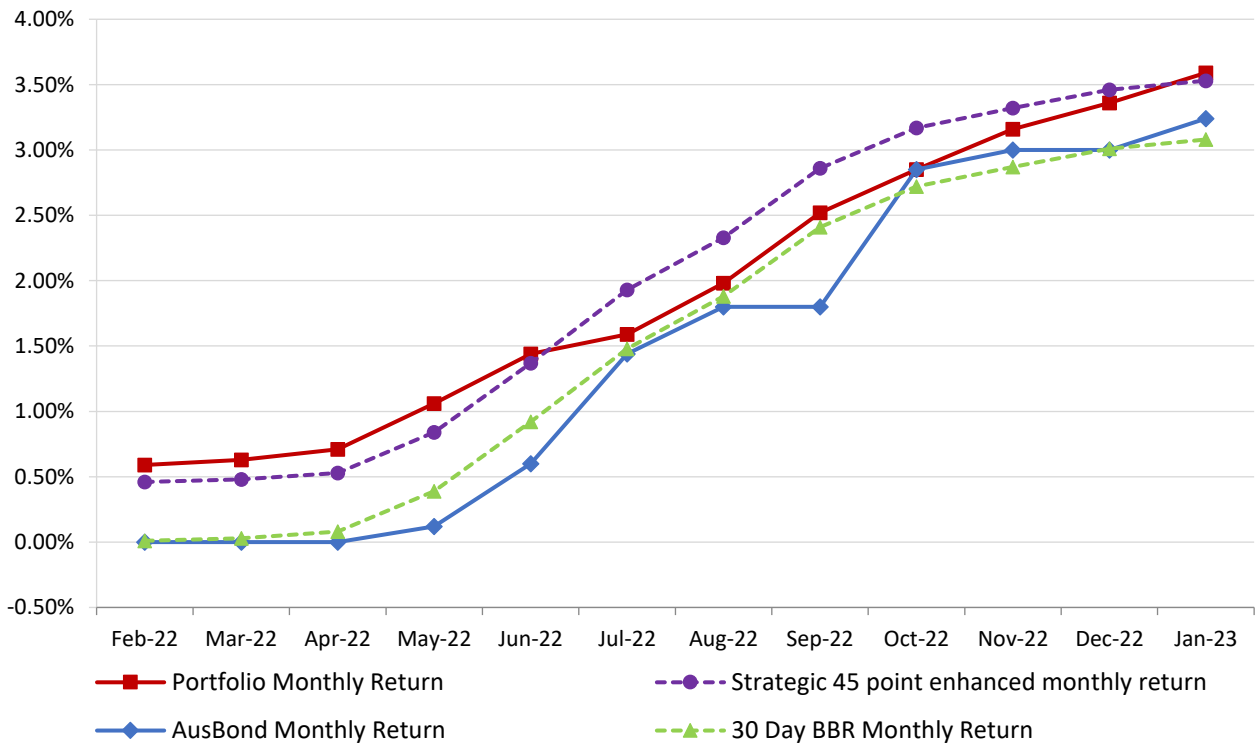
## 12 Month Rolling Averages

Actual Portfolio vs Strategic Enhanced Benchmark vs AusBond Benchmark vs 30 Day BBR Benchmark  
January 2023

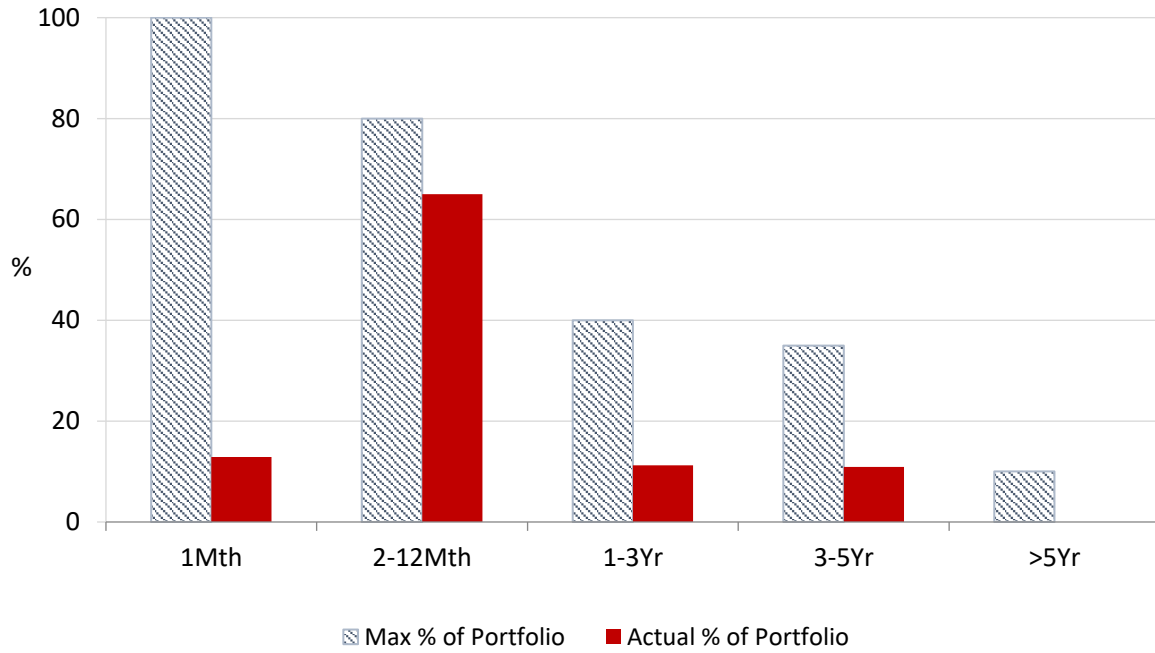


## Monthly Results

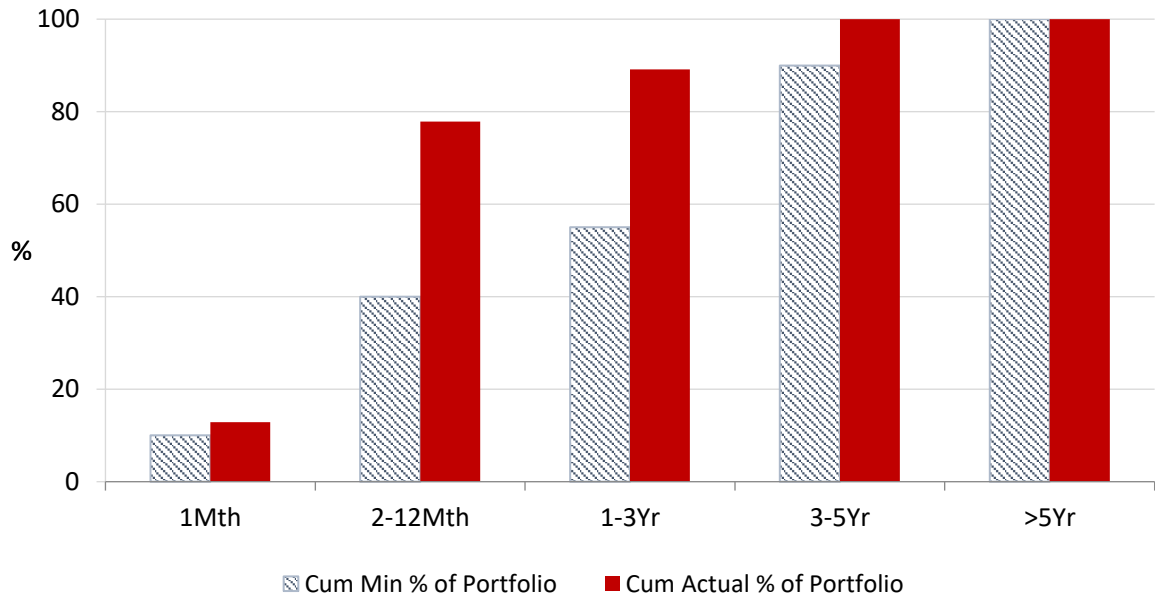
Actual Portfolio vs Strategic Enhanced Benchmark vs AusBond Benchmark vs 30 Day BBR Benchmark  
January 2023



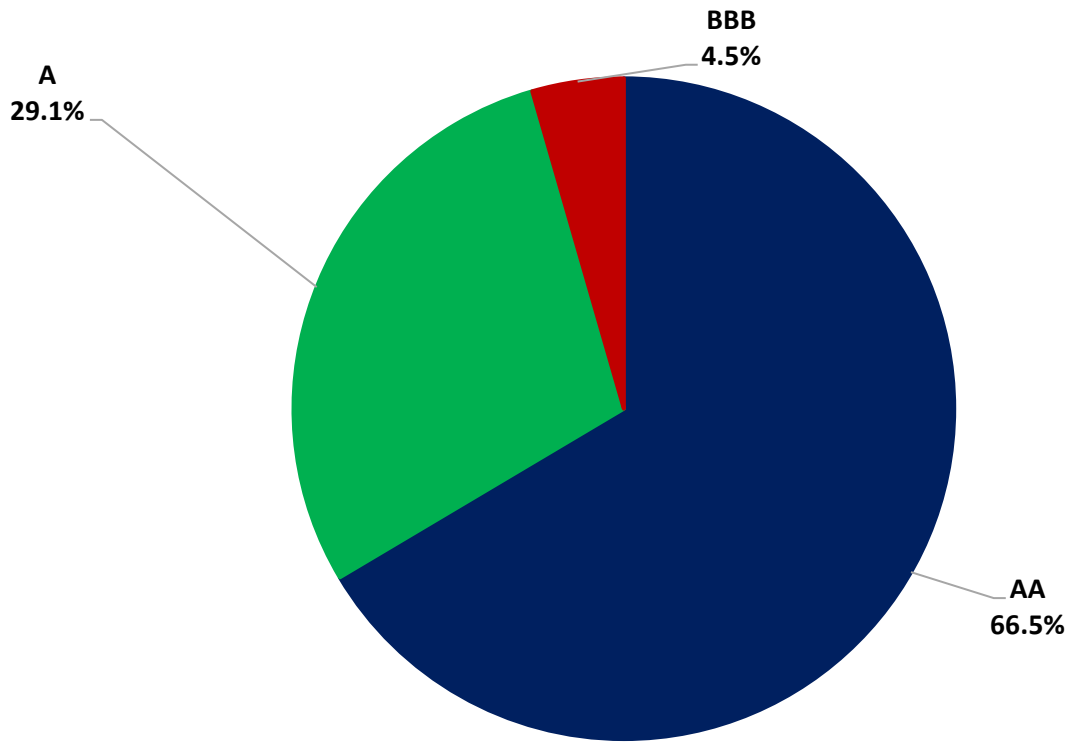
**Portfolio Liquidity - Maximum Allowances as at 31 January 2023**



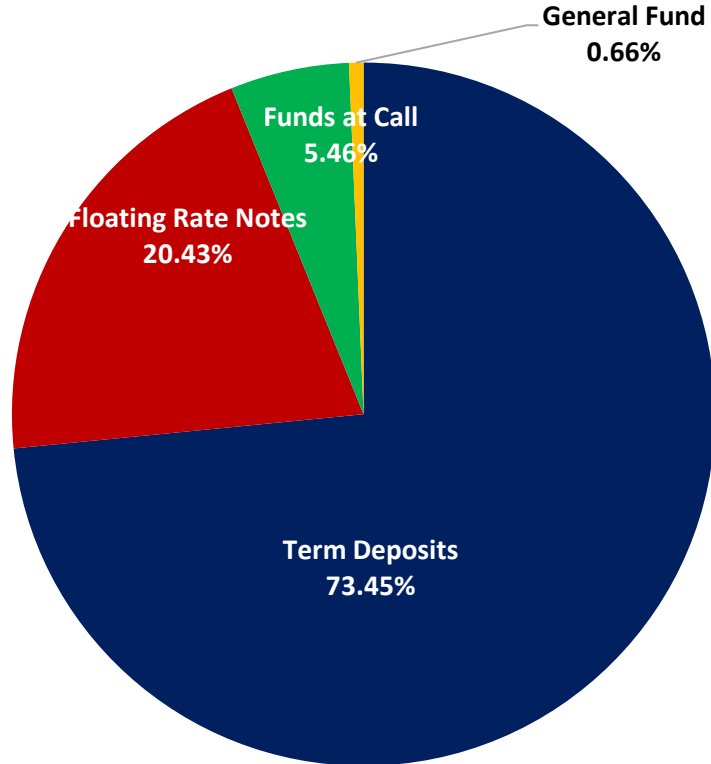
**Portfolio Liquidity - Minimum Allocations as at 31 January 2023**



### Risk Profile as at 31 January 2023



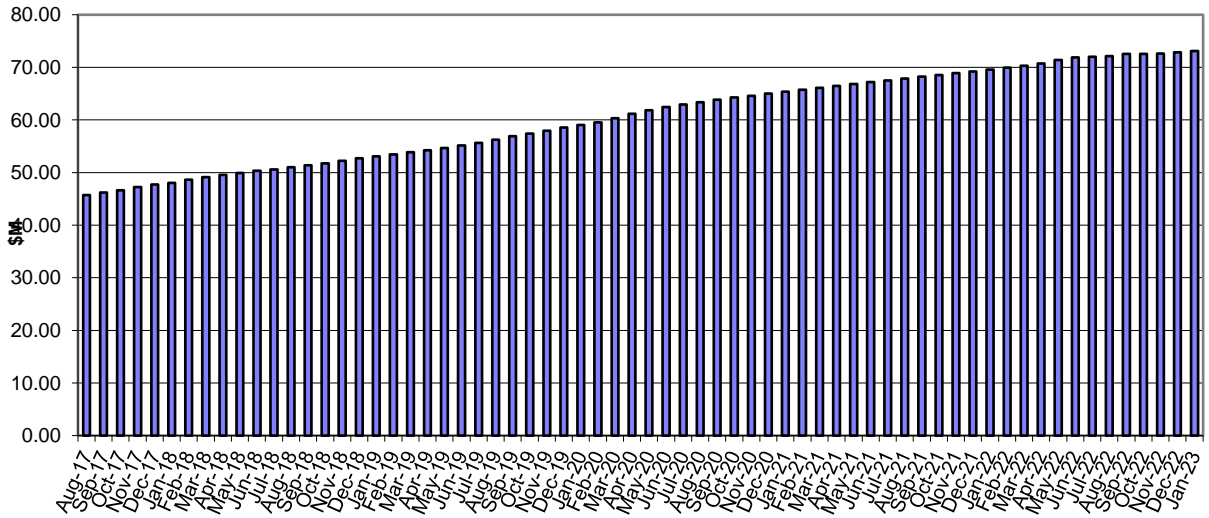
### Risk Profile as at 31 January 2023



**INVESTMENT AND CASH DISTRIBUTION BY FINANCIAL INSTITUTION**  
as at 31 January 2023

Institution Category	Financial Institution	Amount \$M	Financial Inst. %	Institution Cat. %
Australian Big 4 Bank (and related institutions)	ANZ Bank	37.0	5.3	
	Commonwealth Bank	224.7	32.4	
	National Aust Bank	48.9	7.0	
	Westpac Banking Corporation	141.5	20.4	
<b>Big 4 Total</b>		<b>452.1</b>		<b>65.1</b>
Other Australian ADIs and Australian subsidiaries of foreign institutions	Bank Australia Limited	10.0	1.4	
	Bank of Queensland	52.0	7.5	
	Bendigo & Adelaide Bank	40.0	5.8	
	Great Southern Bank (formerly Credit Union Australia)	6.8	1.0	
	ING Bank	50.0	7.2	
	Suncorp Bank	61.3	8.8	
	Macquarie Bank Ltd	10.0	1.4	
	Northern Territory Treasury Corporation	5.0	0.7	
Newcastle Permanent Building Society	7.3	1.0		
<b>Other ADI Total</b>		<b>242.3</b>		<b>34.9</b>
<b>Grand Total</b>		<b>694.4</b>	<b>100.0</b>	<b>100.0</b>

### Cumulative Outperformance over AusBond Benchmark - 2016-2022



### Cumulative Outperformance over 30 Day BBR Benchmark - 2016-2022

